

## Online carbon & waste guide

A consortium of industry business leaders, The South East Centre for the Built Environment (SECBE), has launched an online guide targeted at the construction industry. The guide is designed to help the sector meet the twin challenges of building zero carbon homes by 2016 and radically cutting waste.

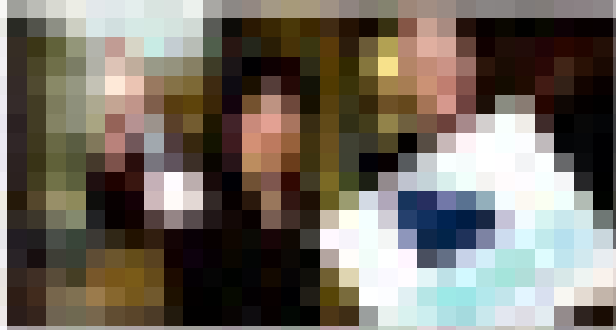
SECBE's chief executive, Derek Rees, said: "Construction businesses, especially smaller ones, might feel they are being enveloped in a cloud of eco initiatives as the drive to low carbon intensifies. They need to find out quickly about carbon zero homes and our guide will be a great way to get ahead."

"Our industry also has to think differently about waste; it costs builders and their clients money, threatens the environment and is truly unsustainable. There's also going to be an increasingly tough regulatory regime, so the sooner we really manage our waste the better."

SECBE's low-carbon housing website, at [www.secbe.org.uk/lch](http://www.secbe.org.uk/lch), provides a comprehensive guide to policies, standards and likely future regulations including the Code for Sustainable Homes, as well as pointing to resources on all aspects of low carbon design and build.

It also features case studies to show how construction firms are meeting their escalating challenges.

The site includes a section on how to prepare the new mandatory Site Waste Management Plans to comply with new regulations coming in on April 6, for all construction projects in England over £300,000 net of VAT.



## Online carbon & waste guide

A consortium of industry business leaders, The South East Centre for the Built Environment (SECBE), has launched an online guide targeted at the construction industry. The guide is designed to help the sector meet the twin challenges of building zero carbon homes by 2016 and radically cutting waste.

SECBE's chief executive, Derek Rees, said: "Construction businesses, especially smaller ones, might feel they are being enveloped in a cloud of eco initiatives as the drive to low carbon intensifies. They need to find out quickly about carbon zero homes and our guide will be a great way to get ahead.

"Our industry also has to think differently about waste; it costs builders and their clients money, threatens the environment and is truly unsustainable. There's also going to be an increasingly tough regulatory regime, so the sooner we really manage our waste the better."

SECBE's low-carbon housing website, at [www.secbe.org.uk/lch](http://www.secbe.org.uk/lch), provides a comprehensive guide to policies, standards and likely future regulations including the Code for Sustainable Homes, as well as pointing to resources on all aspects of low carbon design and build.

It also features case studies to show how construction firms are meeting their escalating challenges.

The site includes a section on how to prepare the new mandatory Site Waste Management Plans to comply with new regulations coming in on April 6, for all construction projects in England over £300,000 net of VAT.